



JOSAM homebase 4



JOSAM®

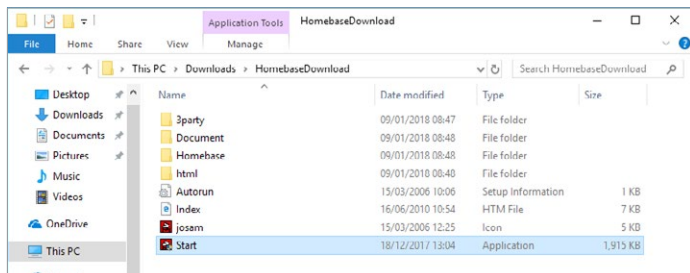
Software installation guide

Contents

<u>Software installation</u>	<u>3</u>
<u>Disabling internal Bluetooth device</u>	<u>8</u>

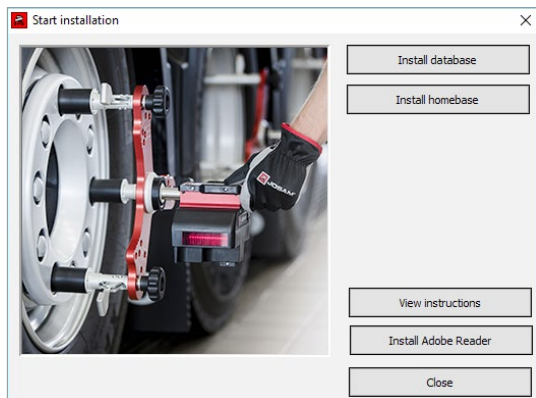
Software installation (Windows 10)

1. Locate the installation media and double click '**Start**'.



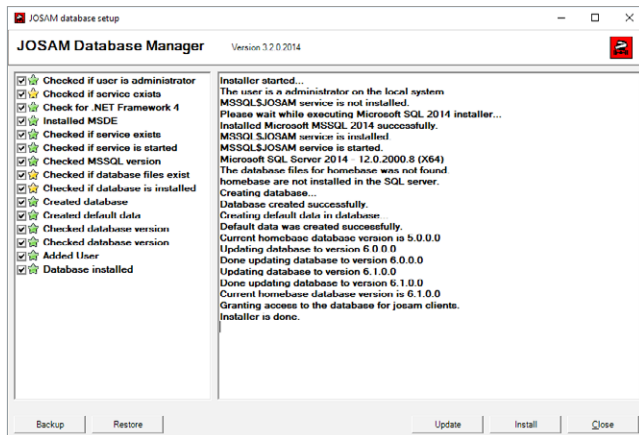
Note: if you downloaded the software, make sure you extract all files first.

2. Click [**Install database**].

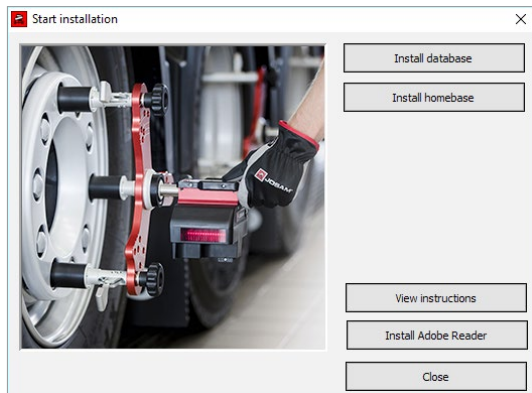


Note: depending on your machine, the database installer might apply necessary prerequisites to meet database requirements.

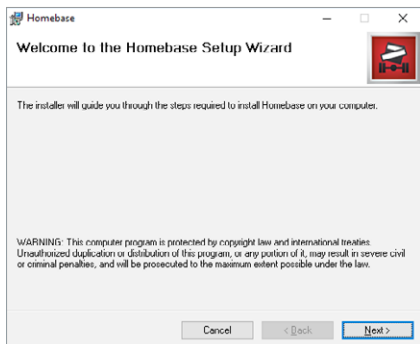
3. Wait for the database installer to finish and then click **[Close]**.



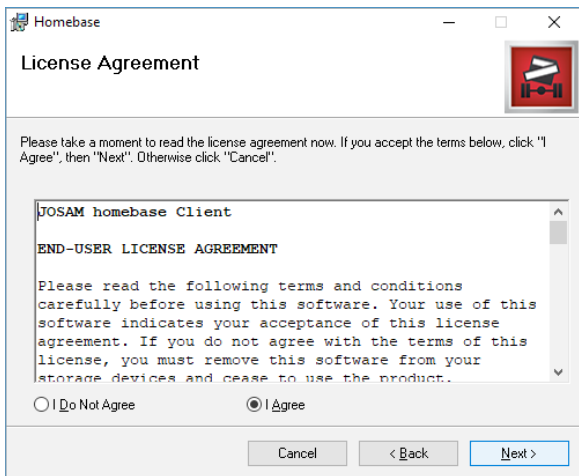
4. Return to the main window and click **[Install Homebase]**.



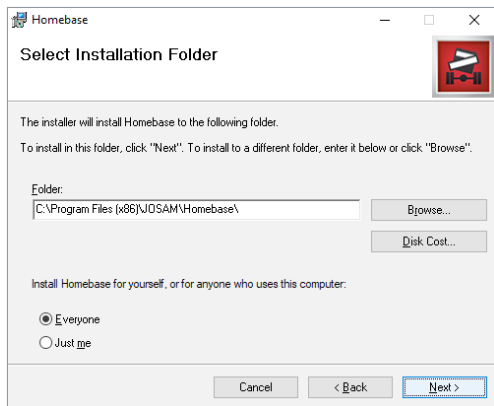
5. Click **[Next]**.



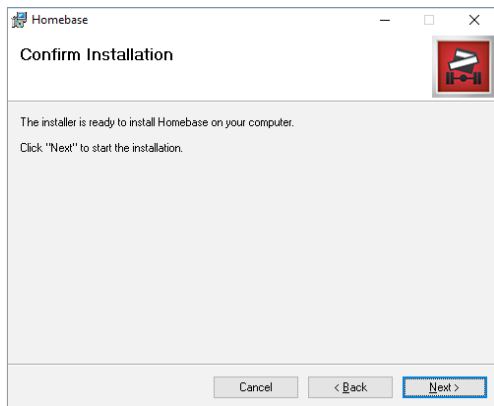
6. Accept the license agreement by selecting **[I Agree]** and click **[Next]**.



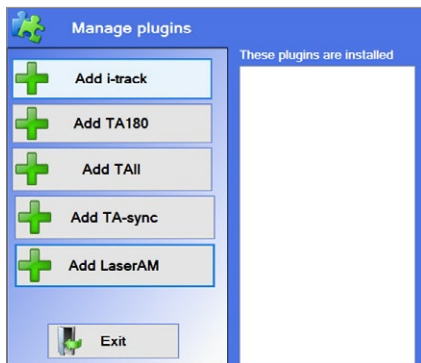
7. Choose an installation folder by clicking **[Browse]** or continue with the default settings by clicking **[Next]**.



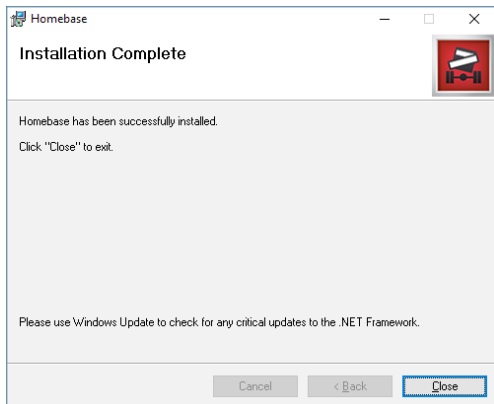
8. Confirm and start the installation by clicking **[Next]**.



9. Select one or more plugins that is appropriate for your system.
You can return to this screen later if you need to make changes.




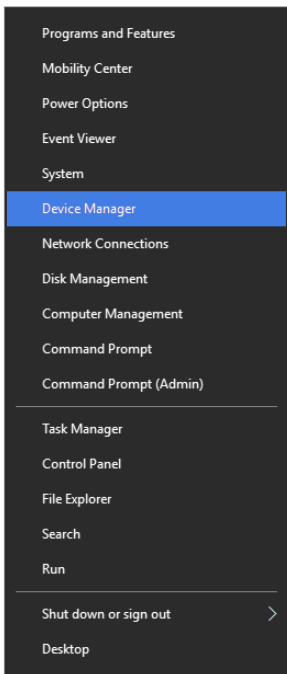
10. Click **[Close]** to finish the client installation. Then exit the installer.



Disabling internal Bluetooth device

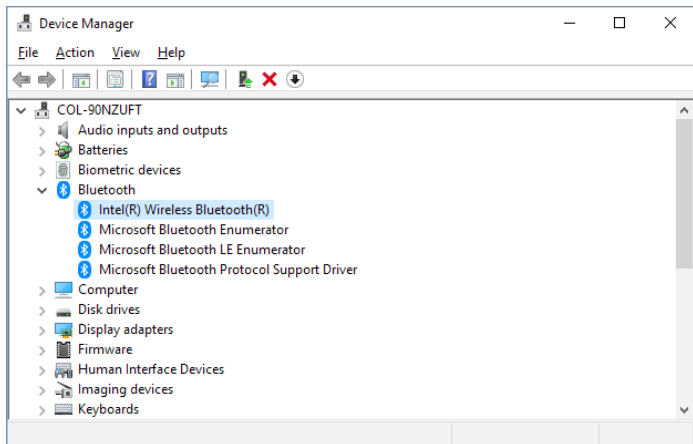
To prevent Bluetooth conflicts, the internal Bluetooth should be disabled before the JOSAM Bluetooth dongle (JT621) is inserted.

1. Right click on the Start menu  and select **[Device Manager]**.



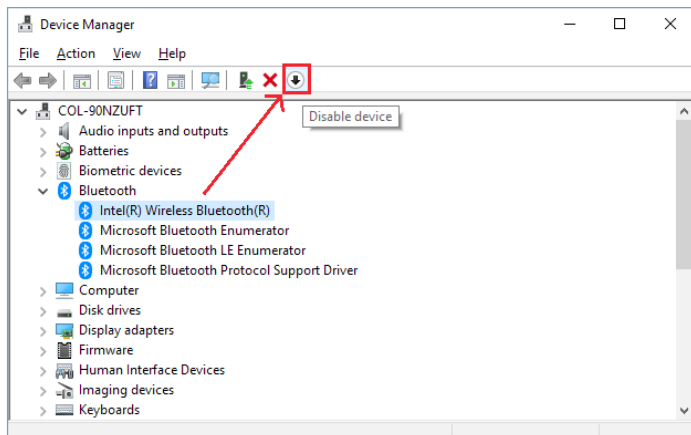
2. Expand the Bluetooth node.

In this example we need to disable "Intel(R) Wireless Bluetooth(R)".



Note: the name(s) of the internal Bluetooth device(s) will differ from computer to computer. Generally speaking, you should disable all Bluetooth devices which do not contain the text "Microsoft Bluetooth" or "TDK Bluetooth".

3. Select each Bluetooth device that should be disabled and click the **[Disable device]** button.



4. After having removed the internal Bluetooth device(s), insert the Josam Bluetooth dongle and launch Homebase.

This page has deliberately been left blank



JOSAM®

www.josam.se